

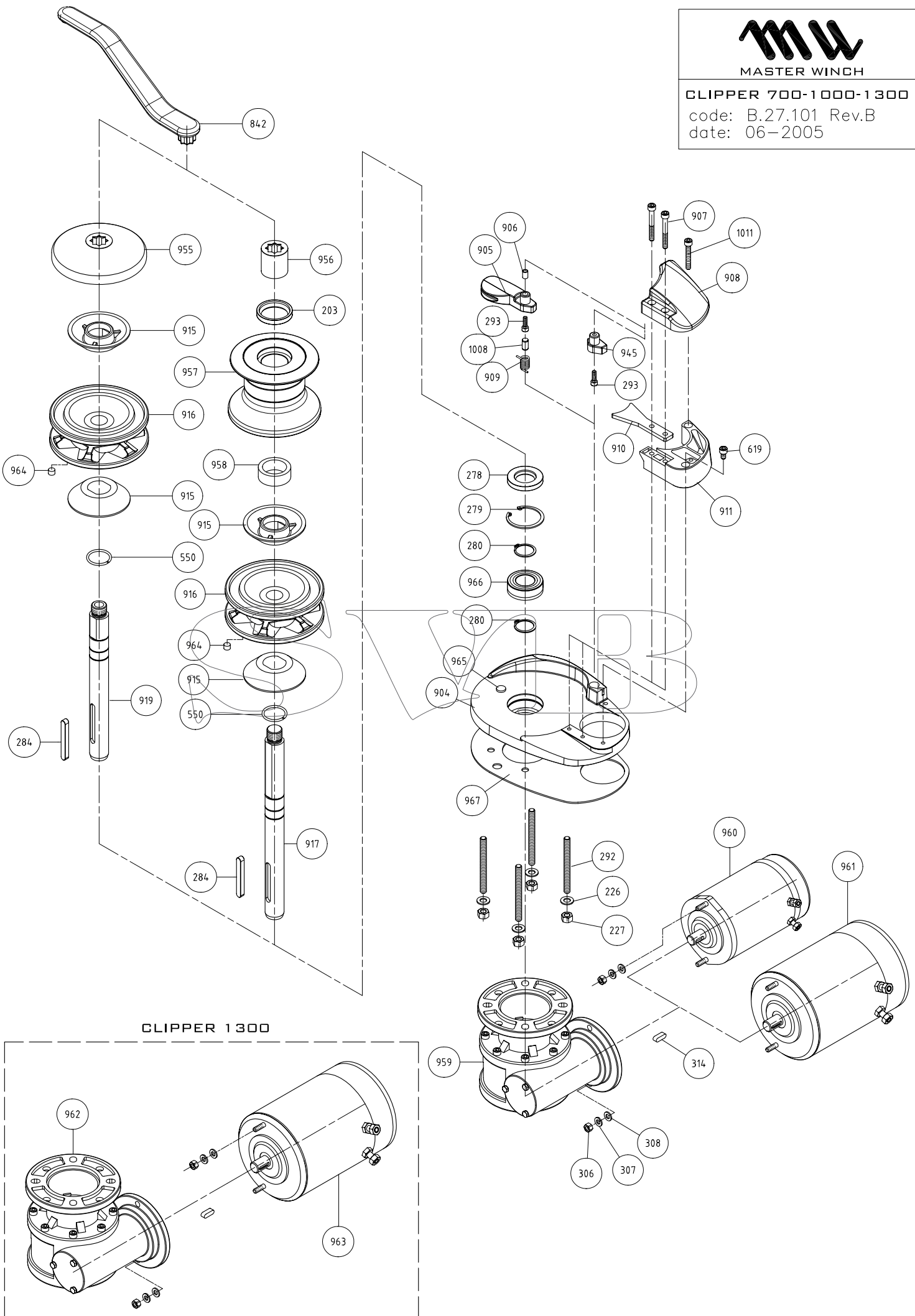


MASTER WINCH

CLIPPER 700-1000-1300

code: B.27.101 Rev.B

date: 06-2005



CLIPPER 1300

CLIPPER 700-1000-1300

Item	Description	Kit	Q.ty
203	Seal 35-45-5	Kit A	1
226	Washer for M8 screw	Kit B	4
227	Nut M8	Kit B	4
278	Seal 25-47-7	Kit A	1
279	Circlip 47 din 472	Kit D	1
280	Circlip 25 Din 471	Kit D	2
284	Key 8x7x60	Kit C	1
292a	Stud M8x75		4
293	Hd cap screw M5x16	Kit F	1
306	Nut M6	Kit B	2
307	Spring washer for M6 screw	Kit B	2
308	Washer for M6 screw	Kit B	2
314	Key 5x5x15	Kit C	1
550	Ring		1
619	Hd cap screw M6x10	Kit B	1
842b	Handle		1
904b	Base		1
905	Finger	Kit F	1
906	Spacer	Kit F	1
907	Hd cap screw M6x50	Kit B	2
908b	Cover		1
909	Spring	Kit F	1
910	Stripper		1
911	Support		1
915	Cone clutch		2
916a	Gipsy chain 06101		1
916b	Gipsy chain 08101		1
916c	Gipsy chain 10101		1
916d	Gipsy chain 10102		1
917a	Std main shaft		1
919a	LP main shaft		1
945	Cap	Kit F	1
955	Gipsy cap		1
956	Clutch nut		1
957	Drum		1
958	Spacer		1
959	Gearbox for 700W-1000W		1
960	Electric motor 700W 12V		1
961a	Electric motor 1000W-12V		1
961b	Electric motor 1000W 24V		1
962	Gearbox for 1300W		1
963a	Electric motor 1300W 12V		1
963b	Electric motor 1300W 24V		1
964	Magnet	Kit S	1
965	Sensor	Kit S	1
966	Bearing 6005 2RS		1
967	Gasket		1
1008	Pivot 7x14	Kit F	1
1011	Hd cap screw M6x40	Kit B	1

Item	Description	Kit	Q.ty
KA27101	Kit A - Seals		1
KB27101	Kit B - Screw&Nuts		1
KC27101	Kit C - Keys		1
KD27101	Kit D - Circlips		1
KF25101	Kit F - Finger		1
KS36101	Kit S - Sensor&magnet		1

