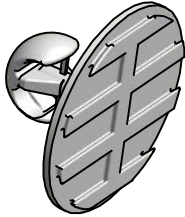


# PC-SM2 Surface mount male adhesive fix

INDUSTRY FIT:    

SPECIFICATION:

STANDARD RANGE



The Fastmount™ multi-award winning system has revolutionized the mounting of panels. Panels can easily be removed and refitted in any sequence time after time.

Surface mount Male is an extension of the Fastmount system, designed for use with thin walled panels and where installers prefer an adhesive fix. It is ideal for new composite materials. Patented Super-grooves mechanically engage into adhesive on the base for secure mounting.

### BENEFITS

- Self-aligning secure mounting (5kg per clip)
- Installation requires no special tools or skilled labour
- Uses Fastmount Super-groove adhesive
- No drilling of panels, fast installation
- Works with existing Fastmount clips
- Allows for flexing and expansion of panel and support frame

USE WITH:

PC-F1A    PC-RF1    PC-SF1    PC-AF1



### APPLICATIONS

- Mounting thin walled panels less than 6mm thick
- Soft or honeycomb cored panels with thin facings
- Mounting panels where no drilling is preferred
- Ideal for refit

MATERIAL: White acetal copolymer

MORE INFO: Installation Guide IG\_PC-F1, SF1, RF1, Setout Guide TD-02, 09, 12

INSTALLATION: Partially exploded section through showing typical installation method

