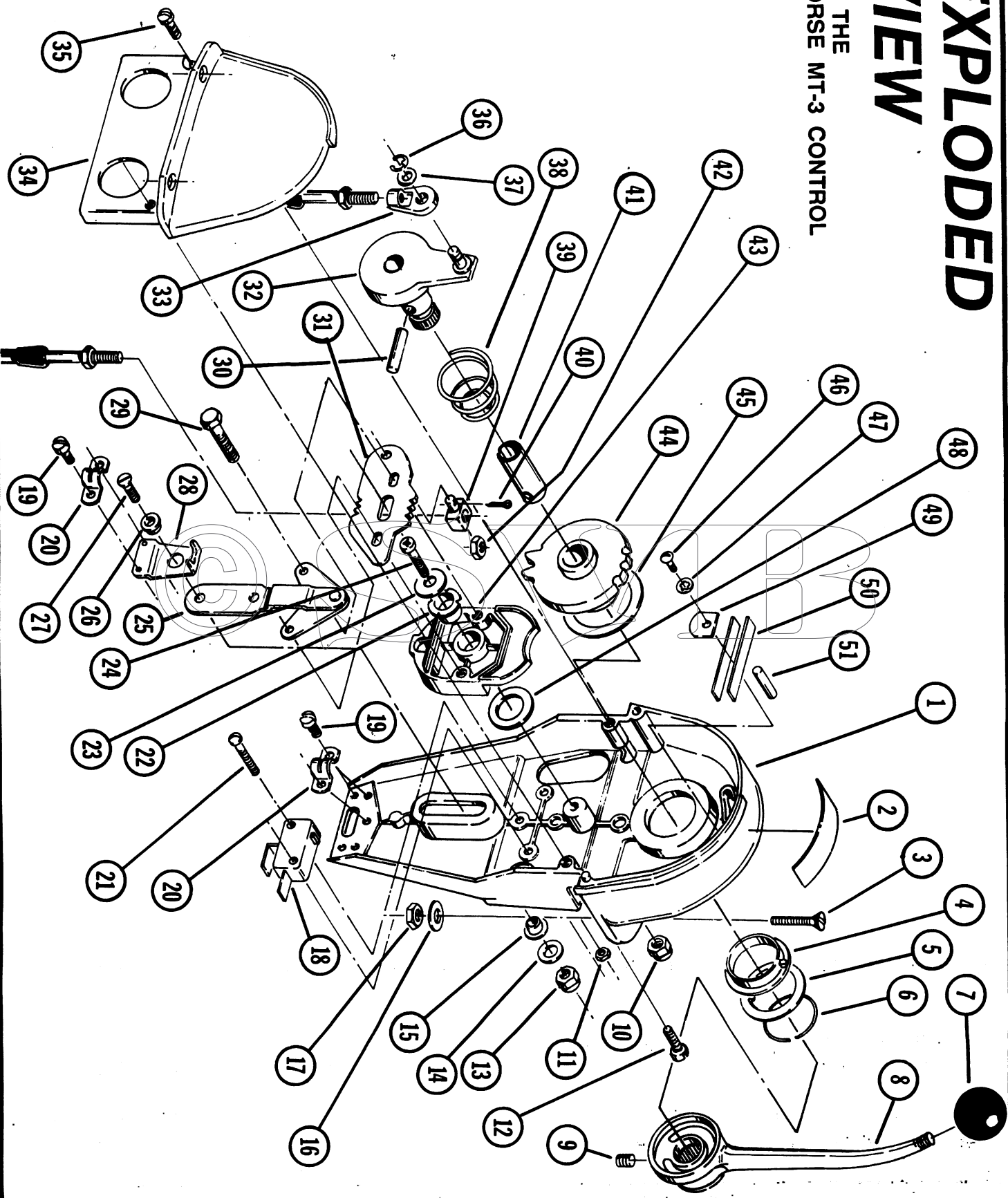


# EXPLODED VIEW

OF THE  
MORSE MT-3 CONTROL



## SECTION 5

# THROTTLE CABLE CONNECTION - CONTROL END

Refer to the **ENGINE APPLICATION GUIDE, SECTION 4**, for the proper Cable action to suit your engine. The Throttle lever may be factory-set for "push" to open throttle. Refer to Figure 4. If you find it necessary to change to "pull" to open throttle, proceed as follows:

1. Remove the Hand Lever.
2. Remove the Throttle Cable, if attached.
3. Remove the Swivel Bracket.
4. Remove the two (2) hex Head Screws at the Link Assembly, and remove the Link, make sure the Shift Arm does not change notch positions.
5. Push in on the Throttle Arm toward the Housing and rotate it 180 degrees until it snaps back into place.
6. Attach the Link Assembly in the desired position using the Hex Head Screws. Tighten the Screws to 75-80 inch lbs.
7. Attach the Swivel Bracket in the proper hole. See Figures 4 and 5 for proper location.
8. Reinstall the Cable and Hand Lever.

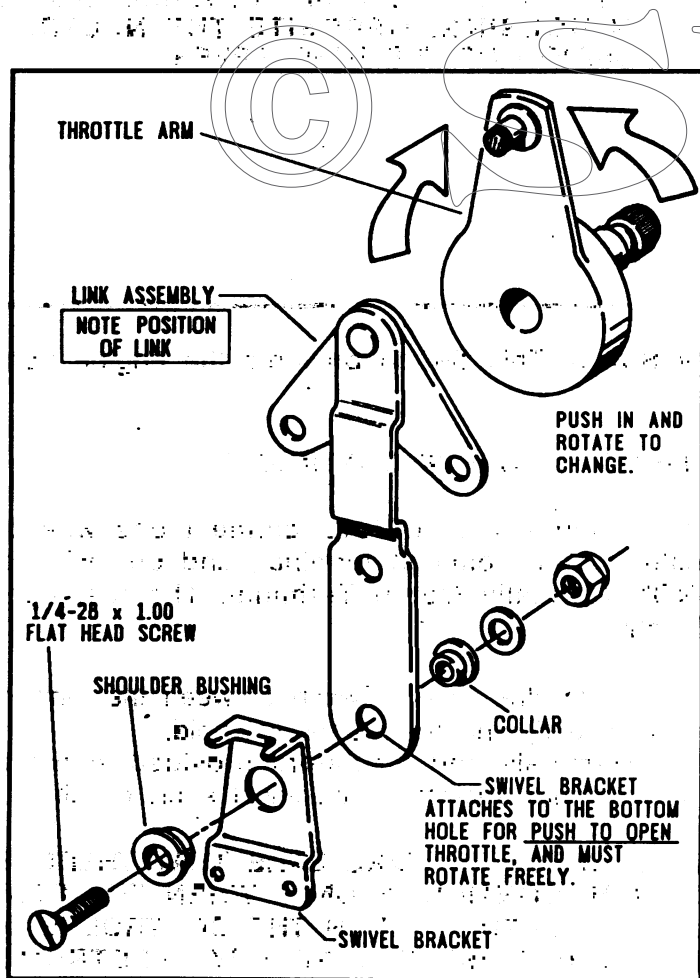


FIGURE 4 PUSH-TO-OPEN CONFIGURATION

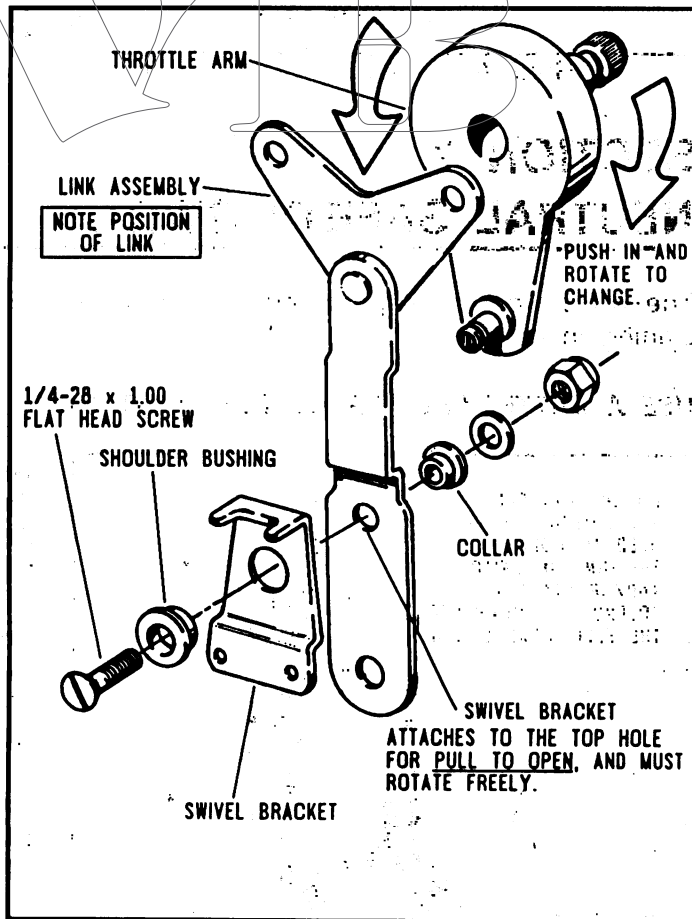


FIGURE 5 PULL-TO-OPEN CONFIGURATION