

GP-1870 & GP-1670 CHART PLOTTER

FURUNO

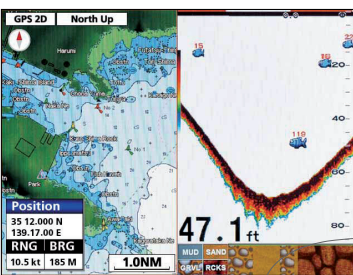


5.7" GPS/WAAS COLOR
CHART PLOTTER
GP-1670

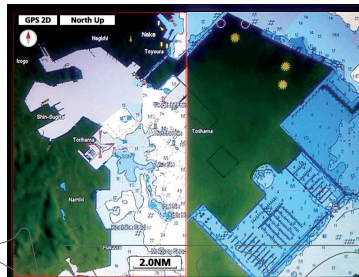
5.7" GPS/WAAS COLOR
CHART PLOTTER with FISH FINDER
GP-1670F

7" WIDE GPS/WAAS COLOR
CHART PLOTTER
GP-1870

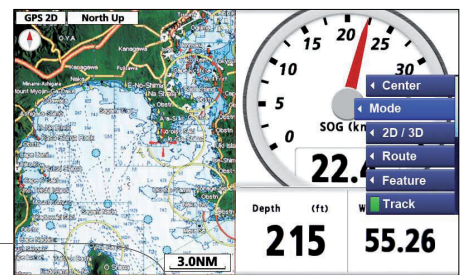
7" WIDE GPS/WAAS COLOR
CHART PLOTTER with FISH FINDER
GP-1870F



Plotter + Fish Finder
(ACCU-FISH, Bottom Discrimination mode)



Dual range chart display



Plotter + SOG + Rotokey

Some of the screenshots used in this page are still provisional, and they may be subject to change in the final products.

- Bright 900 cd/m² (GP-1670/1670F) and 1000 cd/m² (GP-1870/1870F) LCD gives excellent readability
- Bright display provides superior viewing even in direct sunlight
 - The LCD and the AR glass are bonded together to ensure no fogging issues.
 - Clear visibility even when wearing polarized sunglasses.
- Internal GPS antenna for simple and easy installation
- Standard C-Map 4D chart* available in SD card
- ROTO Key revolving menu and familiar point-and-click operation
- Internal memory: Waypoint/Track 30,000 points, Route 1,000 routes
- GP-1870/1870F have built-in WiFi, providing up-to-minute weather service "C-Weather" by Jeppesen Marine*, via Internet.

*Please visit, www.jeppesen.com, for details.

Clear visibility even when wearing polarized sunglasses

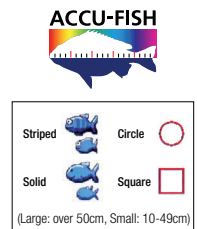
FURUNO New GP Series have LCD screens which do not "black out" when wearing polarized sunglasses at certain angles, providing no loss of visibility while fishing.



"ACCU-FISH" identifies individual fish with size and fish mark function

In order to assess individual fish size, the echo strength from the fish needs to be computed and turned into fish size display on the screen. It can detect the fish size of 10 to 199 cm, in the depth of 2 to 100 m.

In some instances, fish size indicated on the GP-1670F/1870F may differ from its actual size.



Bottom Discrimination feature**

The GP-1670F/1870F Bottom Discrimination feature enables the fish finder to indicate if a major component of the bottom is mud, sand, gravel or rocks.



Please keep the following in mind when using the Bottom Discrimination Sounder:

- 1) Use at a depth of 5 m - 100 m.
- 2) Use transducer in transom mount or thru-hull mount.
- 3) To show a consistent display of the actual bottom, set the range display of the fish finder screen to "auto".
- 4) Enter the ship's draft value
- 5) Use a ship speed of 10 kn or less.
- 6) In some instances, bottom component indicated on the GP-1670F/1870F may carefully differ from its actual bottom structure. Please read the operation manual prior to utilizing this feature.

GP-1670F/GP-1870F:

- Equipped with FURUNO's latest technology: the Bottom Discrimination Function
 - Analyze bottom structure**
- ACCU-FISH — A unique fish size analyzer based on the latest digital technology
- Post-processing Gain Control applied to all echoes displayed on the screen
- White Line feature — Discriminate fish lying near the bottom
 - The top edge of the sea floor is displayed in white to clearly show structures.

** Thru-hull transom transducer mount required.

Specifications



		5.7" GPS/WAAS COLOR CHART PLOTTER		7" WIDE GPS/WAAS COLOR CHART PLOTTER	
		GP-1670	GP-1670F	GP-1870	GP-1870F
GPS/WAAS					
Receiver Type	GPS WAAS	50 channels 1 channel			
Receiving Frequency		L1 (1575.42 MHz)			
Time to First FIX		30 s (cold start)			
Tracking Velocity		999 kt			
SBAS (Satellite-Based Augmentation System)		WAAS, EGNOS, MSAS, GAGAN			
ACCURACY					
Internal Antenna	GPS SBAS	2.5 m Max 2.0 m Max			
External Antenna	GPS SBAS	2.5 m Max 2.0 m Max			
DISPLAY					
Type		5.7" Color TFT LCD		7" Wide Color TFT LCD	
Screen Size		115.2 x 86.4 mm		152.4 x 91.4 mm	
Screen Resolution		VGA 640 x 480 pixels		SVGA 800 x 480 pixels	
Screen Brightness		900 cd/m ² (typical)		1000 cd/m ² (typical)	
Language		English (US & UK), French, Spanish, German, Italian, Portuguese, Danish, Swedish, Norwegian, Finnish, Greek, Japanese, Chinese, Russian, Thai, Vietnamese, Polish, Bahasa Malaysia, Bahasa Indonesia			
Display Modes		Course plot, Nav Data, Instruments, Engine monitor, Anemometer, Fuel level gauge, GPS status	Course plot, Nav Data, Instruments, Engine monitor, Anemometer, Fuel level gauge, GPS status, Fish finder	Course plot, Nav Data, Instruments, Engine monitor, Anemometer, Fuel level gauge, GPS status	Course plot, Nav Data, Instruments, Engine monitor, Anemometer, Fuel level gauge, GPS status, Fish finder
Memory Capacity		30,000 points for ship's track and waypoints 1,000 planned routes (Max. 50 points per route) 5,000 quickpoints (Max routes x max points per route)			
INTERFACE					
CAN bus		1 Port			
Interface (CAN bus)	Input	059392, 059904, 061184, 060928, 127245, 127250, 127251, 127258, 127488, 127489, 127493, 127496, 127497, 127505, 128259, 128267, 129025, 129026, 129029, 129033, 129038, 129039, 129040, 129538, 129540, 129793, 129794, 129798, 129808, 129809, 129810, 130306, 130310, 130311, 130312, 130313, 130314, 130577, 130818, 130821, 130822, 130828, 130880, 130830, 130831, 130832	126208, 126992, 126996, 127237, 127488, 127489, 127493, 127496, 129025, 129026, 129029, 129033, 129793, 129794, 129798, 130310, 130311, 130312, 130313, 130828, 130880, 130830, 130831, 130832	059392, 059904, 061184, 060928, 127245, 127250, 127251, 127258, 127488, 127489, 127493, 127496, 127497, 127505, 128259, 128267, 129025, 129026, 129029, 129033, 129038, 129039, 129040, 129538, 129540, 129793, 129794, 129798, 129808, 129809, 129810, 130306, 130310, 130311, 130312, 130313, 130314, 130577, 130818, 130821, 130822, 130828, 130880, 130830, 130831, 130832	126208, 126992, 126996, 127237, 127488, 127489, 127493, 127496, 129025, 129026, 129029, 129033, 129793, 129794, 129798, 130310, 130311, 130312, 130313, 130828, 130880, 130830, 130831, 130832
	Output	059392, 059904, 061184, 060928, 127245, 127250, 127251, 127258, 127488, 127489, 127493, 127496, 127497, 127505, 128259, 128267, 129025, 129026, 129029, 129033, 129038, 129039, 129040, 129538, 129540, 129793, 129794, 129798, 129808, 129809, 129810, 130306, 130310, 130311, 130312, 130313, 130828, 130880, 130830, 130831, 130832	126208, 126464, 126992, 126996, 129025, 129026, 129029, 129033, 130310, 130311, 130312, 130313, 130828, 130880, 130830, 130831, 130832	059392, 059904, 061184, 060928, 127245, 127250, 127251, 127258, 127488, 127489, 127493, 127496, 127497, 127505, 128259, 128267, 129025, 129026, 129029, 129033, 129038, 129039, 129040, 129538, 129540, 129793, 129794, 129798, 129808, 129809, 129810, 130306, 130310, 130311, 130312, 130313, 130828, 130880, 130830, 130831, 130832	126208, 126464, 126992, 126996, 129025, 129026, 129029, 129033, 130310, 130311, 130312, 130313, 130828, 130880, 130830, 130831, 130832
USB*		1 Port (2.0)			
SD Cart Slot		1 Slot (Acceptable up to 32G Bytes)			
WiFi		IEEE 802.11b/g/n			
Electronic Chart		C-MAP 4D			
ECHO SOUDER					
Transmit Frequency		50/200 kHz		50/200 kHz	
Transmission		600 W or 1 kW*		600 W or 1 kW*	
Display Range		2-1,200 m, shift: 0-1,200 m		2-1,200 m, shift: 0-1,200 m	
Extension Mode		ACCU-FISH, Auto (Fishing/Cruising/Manual), A-Scope, Marker Zoom, Bottom Zoom, Bottom Lock, Bottom Discrimination		ACCU-FISH, Auto (Fishing/Cruising/Manual), A-Scope, Marker Zoom, Bottom Zoom, Bottom Lock, Bottom Discrimination	
Picture Advance		8 steps: 2/1, 1/1, 1/2, 1/4, 1/8, 1/16, 1/32, stop		8 steps: 2/1, 1/1, 1/2, 1/4, 1/8, 1/16, 1/32, stop	
ENVIRONMENT					
Temperature	Display Unit	-15°C to -55°C			
Waterproofing	Display Unit	IP56			
POWER SUPPLY					
		12-24 VDC		12-24 VDC	
		0.88 - 0.46 A	1.05 - 0.53 A	0.93 - 0.49 A	1.05 - 0.53 A (Equip 520-5PD) 1.37 - 0.64 A (Equip 50/200-1T)

* Matching box MB-1100 required

