

The purpose of this guide is to provide the basic operation for this equipment. For more detailed information, see the Operator's Manual.

All brand and product names are trademarks, registered trademarks or service marks of their respective holders.

### Controls

**POINTS/GO TO key**  
Short push: Enter point at cursor position.  
Long push: Go to selected point.

**HOME/CTRL key**  
Short push: Select display.  
Long push: Switch active display.

**ESC/MENU key**  
Short push: Escape current operation.  
Long push: Show menu.

**CursorPad**  
Arrows: Move cursor.  
ENT key: Display pop-up menu.

**EVENT/MOB key**  
Short push: Enter point at current position.  
Long push: Enter MOB mark.

**POWER/BRILL key**  
Short push: Power on; adjust brilliance.  
Long push: Power off.

**RotoKey™**  
Rotate: Zoom in/out chart; select menu item.  
Short push: Display base RotoKey menu.  
Long push: Display full RotoKey menu.

### Operations

#### How to zoom in or out the chart scale (2D mode only)

##### Zoom in



##### Zoom out



#### How to pan the charts



#### How to enter a point

- Cursor position
- Current position
- MOB position (Long push)

#### How to go to a point

##### Quick point

Select a position. (Long push)

##### Saved point

Put cursor on a point.

MOVE  
DELETE  
EDIT  
GOTO  
DETAILED  
EASY ROUTING

Select [GOTO].

#### How to select 2D/3D mode

2D/3D Mode

2D  
2D Perspective  
3D

#### How to find object information

Put cursor on an object.

**Object Information**  
Tower White 85 Feet  
Flashing(1) White, 15 Seconds  
85 Feet 24 Miles

# Fish Finder

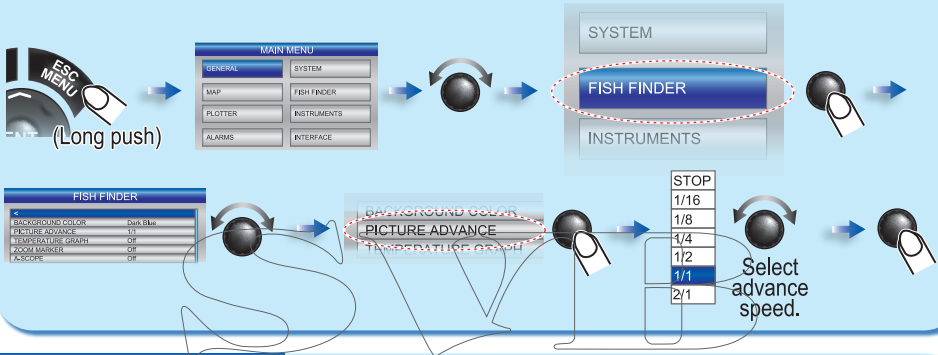
## How to select the operating mode



## How to select the operating frequency



## How to select picture advance speed



## How to adjust the picture

